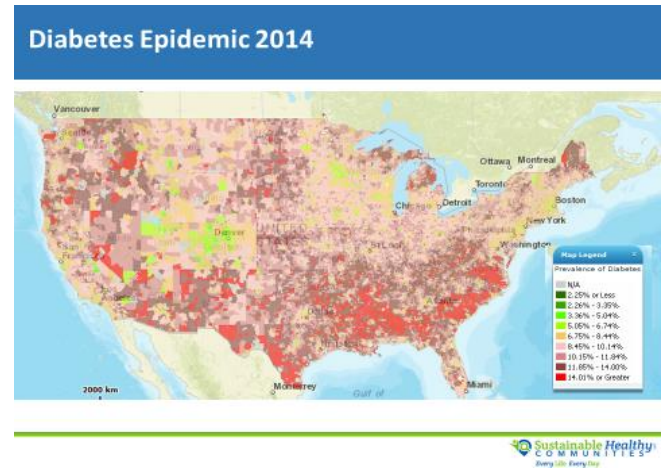


Promoting Diabetes Equity

Diabetes is a large and growing public health emergency, especially among people of color and the poor who face serious co-morbidities such as heart and kidney disease, limited access and/or connection to primary care, poor adherence, and as a result, repeated episodes of costly hospitalization. 40% of adults living with diabetes are in the Medicare Fee-for-Service program, concentrated in 7500 zip codes in the U.S. Sustainable Healthy Communities (SHC) is working with partners to address the needs of this population and achieve the triple aim of good care, outcomes, and controlled costs.



Diabetes Advisory Group Roundtable

In March of 2017, SHC convened national experts, patient advocates, and industry leaders to probe discuss the challenge diabetes poses to our nation and especially to diverse populations facing significant social and environmental challenges. The participants, listed below, urged an effort that will use data to help primary care practices and communities engage in strategic planning and improvement activities that will help the most challenged diabetes population better engage in ambulatory care, enhancing outcomes, addressing social determinants, and avoiding unnecessary hospitalizations.

Diabetes Working Group

As a result, SHC has launched the Diabetes Working Group, as a public-private partnership to promote patient-centered and sustainable health care and outcomes for diverse diabetes populations in most need. Through a series of meetings, an updated Diabetes Index mapping the toll of diabetes, and the development of communications around the toll of diabetes in the U.S. and recommended strategies for improvement, this 3-year initiative will drive a community-based initiative, in which health care providers and advocates from hard hit communities will implement practice improvement and community change efforts to promote patient-centered care. The DWG is chaired by Bruce Taylor, and includes the following sponsors to date: Ascensia, AstraZeneca, Dexcom, Eli Lilly and Company, Horizon Blue Cross Blue Shield, and

Sanofi. Sponsorship includes participation in bi-monthly conference calls, one in-person meeting, and input to the DWG's activities. Corporate sponsorship is \$25,000 per year.



First Regional Program: Brooklyn, NY Diabetes Equity Task Force

The first community initiative realizes a partnership of health leaders in Brooklyn, NY, including: the State University of New York (SUNY)-Downstate Medical Center, School of Public Health, Nursing School, the Arthur Ashe Institute for Urban Health, and Brooklyn Health Disparities Center. The team is working collaboratively to identify strategies for greater connection of the patients with diabetes to ongoing care, self-help support, and primary care treatment. The group is actively conducting a community assessment as it identifies the health care system and community leaders to participate in training session in early 2018.

To join the Diabetes Working Group and bring the initiative to your community, contact us at lhall@shcllc.info

Advisory Group Participants

Pamela Allweiss, MD, MSPH Medical Officer, Centers for Disease Control and Prevention, Division of Diabetes Translation	Rita R. Kalyani, MD, MHS Associate Professor of Medicine Johns Hopkins University School of Medicine
Marie T. Brown, MD Senior Physician Advisor, Physician Satisfaction and Practice Sustainability Group, AMA Associate Professor, Rush Medical College	Alina Kolomeyer, PharmD Post-Doctoral Fellow, North America Public Affairs Sanofi
John D. Couk, MD Chief Medical Officer, Assistant Professor of Emergency Medicine Louisiana State University Health Care Services Division	Beth Mitchell, MPH, BSN, RN Research Scientist, Global Patient Outcomes and Real World Evidence, Diabetes, Eli Lilly and Company
Jaime Davidson, MD Clinical Professor of Medicine, University of Texas Southwestern Medical School	Anna Norton, MS CEO DiabetesSisters
James Flanagan Ascensia Diabetes Care	Markus Ott Global Head Market Access & Policy Ascensia
Keith C. Ferdinand, MD Professor Tulane University School of Medicine	Christopher G. Parkin President, CGParkin Communications, Inc.
Emily C. Freeman, MSc, PhD Senior Research Scientist, Global Patient Outcomes and Real World Evidence Patient Focused Outcomes, Eli Lilly and Company	Gary A. Puckrein, PhD CEO and President National Minority Quality Forum
James R. Gavin III, MD, PhD CEO and Chief Medical Officer of Healing Our Village, Inc Clinical Professor of Medicine, Emory University School of Medicine	Bernard M. Rosof, MD President and CEO, Sustainable Healthy Communities, LLC CEO of Quality in Health Care Advisory Group
Laura Lee Hall, PhD Chief Operating Officer and Executive Vice President, Sustainable Healthy Communities, LLC	Bruce T. Taylor Director of Government Affairs and Market Access Dexcom
Jennal L. Johnson, MS, FNP, CDE, BC-ADM, CDTC Principal Research Scientist, Eli Lilly and Company	Gloria A. Wilder, MD Vice President, Centene Corporation
Simone Karp, RPh Group Vice President Premier, Inc.	Larisa Yedigarova, MD, PhD US Medical Director – Cardiovascular Amgen US Medical Organization

About Sustainable Healthy Communities, LLC

A wholly owned subsidiary of the National Minority Quality Forum, SHC is a pioneering healthcare information company that measures population health, provides actionable analysis to clinicians, health care systems, researchers, corporations and policy makers as well as patients, their caregivers and community leaders. www.shcllc.info



Expert Members of the Diabetes Working Group and Equity Task Force	
Chair - Jaime A. Davidson, MD Clinical Professor of Medicine Touchstone Diabetes Center The University of Texas Southwestern Medical Center	James R. Gavin III, MD, PhD CEO and Chief Medical Officer of Healing Our Village, Inc Clinical Professor of Medicine, Emory University School of Medicine
Marie T. Brown, MD Associate Professor, Rush Medical College Senior Physician Advisor, Physician Satisfaction and Practice Sustainability Group American Medical Association	David Marrero, PhD Director of the Center for Health disparities Research University of Arizona Health Sciences
A. Enrique Caballero, MD Harvard Medical School Founder, Latino Diabetes Initiative Joslin Diabetes Center	Anna Norton, MS CEO DiabetesSisters
John D. Couk, MD Chief Medical Officer, Assistant Professor of Emergency Medicine Louisiana State University Health Care Services Division	Christopher G. Parkin President, CGParkin Communications, Inc.
Keith C. Ferdinand, MD Professor of Medicine Tulane Heart and Vascular Institute Tulane University School of Medicine	Gloria A. Wilder, MD Vice President, Centene Corporation
Corporate Members of the Diabetes Working Group and Equity Task Force	
AstraZeneca	Merck
Centene	Novo Nordisk
Dexcom	Sanofi
Eli Lilly and Company	

About Sustainable Healthy Communities, LLC

A wholly owned subsidiary of the National Minority Quality Forum, SHC is a pioneering healthcare information company that measures population health, provides actionable analysis to clinicians, health care systems, researchers, corporations and policy makers as well as patients, their caregivers and community leaders. www.shcllc.info



@SHC_Tweets
www.twitter.com/SHC_Tweets



Sustainable Healthy Communities
www.linkedin.com/company/sustainablehealthycommunities